

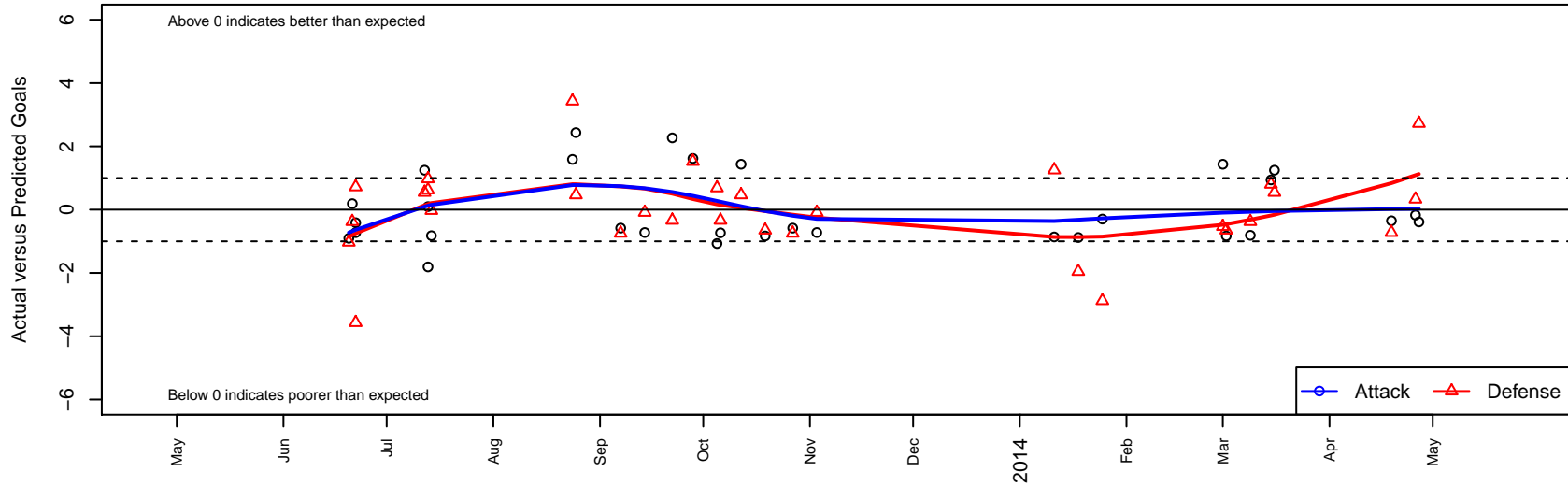
Washington Timbers Crimson G01

Washington Timbers
 Vancouver, WA
 G01 total strength=399
 attack=0.27 defense=0.23
 fall league = Spr OYS G01 Spring White, PML (PML G01 U12
 alt names used:
 WTFc Crimson G01
 WTFc G01 Crimson

Venues played:
 Cascadia Challenge Silver U12
 PCU Summer Classic GU12 Silver Black
 Summer Slam Silver U12
 Founders Cup G01
 Spr OYS G01 Spring White



Washington Timbers Crimson G01
 Dots are actual minus expected GF (blue circles) and GA (red triangles).
 Blue line is smoothed change in attack strength. Red is smoothed change in defense strength.



	date	home		away		venue	pred.home	pred.away
7823	2014-04-27	Washington Timbers Crimson G01	0	Kidsport Rolling Thunder G01	0	Spr OYS G01 Spring White	0.39	2.72
7797	2014-04-26	PCU White G01	0	Washington Timbers Crimson G01	2	Spr OYS G01 Spring White	0.33	2.17
7767	2014-04-19	Washington Timbers Crimson G01	2	Westside Timbers Samba TS G01	2	Spr OYS G01 Spring White	2.35	1.28
7448	2014-03-16	Washington Timbers Crimson G01	3	PCU Black G01	0	Spr OYS G01 Spring White	1.75	0.54
7415	2014-03-15	Bend FC Timbers White G01	1	Washington Timbers Crimson G01	2	Spr OYS G01 Spring White	1.80	1.06
7357	2014-03-09	Westside Timbers Samba G01	1	Washington Timbers Crimson G01	1	Spr OYS G01 Spring White	0.62	1.81
7253	2014-03-02	FC Columbia County G01	2	Washington Timbers Crimson G01	0	Spr OYS G01 Spring White	1.35	0.83
7203	2014-03-01	Washington Timbers Crimson G01	3	THSSP Blue Thorns G01	1	Spr OYS G01 Spring White	1.56	0.47
6958	2014-01-25	NSC Velocity G01	6	Washington Timbers Crimson G01	0	Founders Cup G01	3.12	0.30
6907	2014-01-18	Washington Timbers Crimson G01	0	Seattle United W Blue G01	4	Founders Cup G01	0.88	2.05
6868	2014-01-11	Crossfire Select Wilkinson G01	1	Washington Timbers Crimson G01	0	Founders Cup G01	2.25	0.86
6435	2013-11-03	Washington Timbers Crimson G01	0	Albany FC The Fury G01	2	PML G01 U12	0.72	1.91
6278	2013-10-27	Washington Timbers Burgundy G01	3	Washington Timbers Crimson G01	0	PML G01 U12	2.26	0.58
6050	2013-10-19	Washington Timbers Crimson G01	0	FC Columbia County G01	2	PML G01 U12	0.83	1.35
5900	2013-10-12	Washington Timbers Crimson G01	3	THSSP Blue Thorns G01	0	PML G01 U12	1.56	0.47
5800	2013-10-06	Washington Timbers Crimson G01	0	CYSA Timber Barons White G01	2	PML G01 U12	0.73	1.66
5707	2013-10-05	WAFC Cobras G01	2	Washington Timbers Crimson G01	0	PML G01 U12	2.69	1.07
5537	2013-09-28	CYSA Timber Barons Green G01	0	Washington Timbers Crimson G01	2	PML G01 U12	1.52	0.38
5460	2013-09-22	CYSA Timber Barons White G01	2	Washington Timbers Crimson G01	3	PML G01 U12	1.66	0.73
5232	2013-09-14	Albany FC The Fury G01	2	Washington Timbers Crimson G01	0	PML G01 U12	1.91	0.72
5089	2013-09-07	Washington Timbers Crimson G01	0	Washington Timbers Burgundy G01	3	PML G01 U12	0.58	2.26
4958	2013-08-25	Washington Timbers Crimson G01	4	THSSP Blue Thorns G01	0	Summer Slam Silver U12	1.56	0.47
4922	2013-08-24	Washington Timbers Crimson G01	2	Eastside Timbers Black G01	0	Summer Slam Silver U12	0.41	3.43
4188	2013-07-14	Washington Timbers Crimson G01	0	Crossfire OR OC Fusion G01	3	PCU Summer Classic GU12 Silver Black	0.82	2.97
4167	2013-07-13	Washington Timbers Crimson G01	3	Crossfire OR LOSC Thunder G01	0	PCU Summer Classic GU12 Silver Black	2.90	0.97
4168	2013-07-13	Westside Timbers Samba G01	0	Washington Timbers Crimson G01	0	PCU Summer Classic GU12 Silver Black	0.62	1.81
4135	2013-07-12	PCU Black G01	0	Washington Timbers Crimson G01	3	PCU Summer Classic GU12 Silver Black	0.54	1.75
3980	2013-06-22	HSC Tiki Taka G01	2	Washington Timbers Crimson G01	0	Cascadia Challenge Silver U12	2.72	0.73

	date	home		away		venue	pred.home	pred.away
3982	2013-06-22	Eastside Timbers Black G01	7	Washington Timbers Crimson G01	0	Cascadia Challenge Silver U12	3.43	0.41
3961	2013-06-21	Washington Timbers Crimson G01	2	Westside Timbers Samba G01	1	Cascadia Challenge Silver U12	1.81	0.62
3952	2013-06-20	Crossfire OR LOSC Thunder G01	2	Washington Timbers Crimson G01	2	Cascadia Challenge Silver U12	0.97	2.90